



The Dairy Apartment

Higher Strand, St Mary's,

TR21 0PT



Sleeps 2 | Wednesday Change over

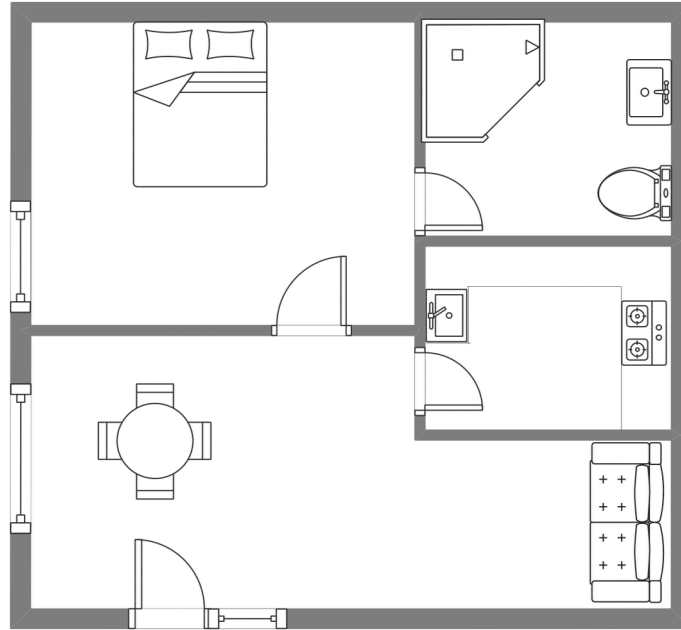
- Super King or Twin Arrangement
- Internet Access
- Children Welcome
- Laundry Facility
- Convenient location for beaches and Quay

This well-appointed one-bedroom (sleeps 2) self-catering apartment is in the desirable centre of St Mary's, Isles of Scilly, and just a few footsteps distance from Town Beach with its views across the harbour, quay, and the off islands: Samson, Bryher and Tresco on the skyline.

Shops, cafes, pubs, hairdressers, churches, arts and crafts galleries, glorious beaches, and the quay are all within short, easy walking distance.

The accommodation is roomy and relaxed with a cheerful, eclectic mix of modern décor. The bed can be made as a super king or twin beds - please let us know which you'd prefer at the time of booking.

Layout



Getting to the property

Map of St Marys



Directions from the Quay | Walking time: 6-8 minutes

Head towards the entrance to the quay
Turn left at The Mermaid Inn on to Hugh Street
Keep to the left side of the road
Continue along Hugh Street, past Bordeaux shop.

Stay on the left, following main road alongside Town Beach. When you reach the end of Town Beach, turn right and walk across the road. Take steps on the left side of "The Dairy" building which will lead you to the entrance door of The Dairy Apartment.

What3words///sounding.orange.mistaking

Scilly Self Catering
Lower Strand
Isles of Scilly, TR21 0PS

Enquiries@scillyselfcatering.com
01720 422082
www.scillyselfcatering.com